

**2 Way 0° Power Divider
5-2400MHz**

**MAPDCT0026
V1P**

Features

- Surface Mount
- 2 Way 0 degree
- 260°C Reflow Compatible
- RoHS* Compliant
- RoHS version of MAPDCT0012.
- Available on Tape and Reel. Reel quantity 2000

Description



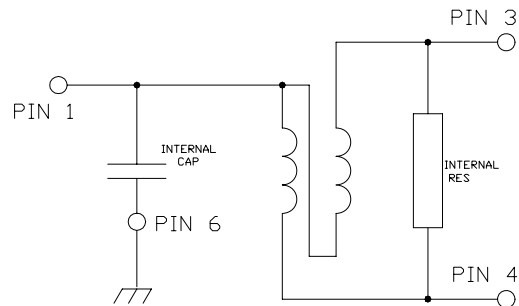
Pin Configuration

Pin No.	Function
1	Input
2	Not connected (ground)
3	Output 1
4	Output 2
5	Not connected (ground)
6	Ground

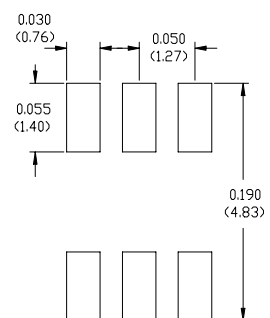
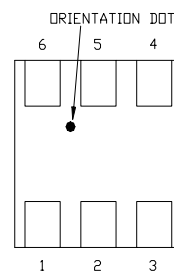
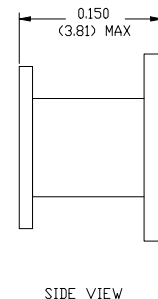
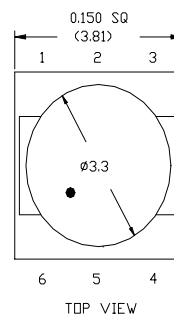
Ordering Information

Part Number	Package
MAPDCT0026TR	2000 piece reel
MAPD-007996-CT26TB	Customer Test Board

Schematic



Case Style: SM-156



Dimensions in inches [mm] Tolerance: .xx ± .02, .xxx ± .010

Note: Reference Application Note **M513** for reel size information.

* Restrictions on Hazardous Substances, European Union Directive 2002/95/EC.

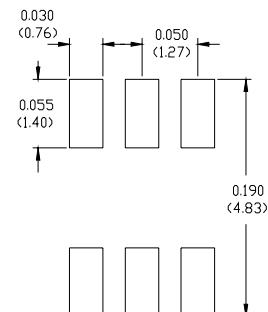
Electrical Specifications: $T_A = 25^\circ\text{C}$, $Z_0 = 75\Omega$ ¹

Parameter	Test Conditions	Frequency	Units	Min	Typ	Max
Insertion Loss	-	5 - 870 MHz	dB	-	0.7	1.0
		870 - 1000 MHz	dB	-	0.9	1.1
		1000 - 2150 MHz	dB	-	1.2	2.5
		2150 - 2400 MHz	dB	-	2.8	3.9
Amplitude Unbalance (Nominal 0dB)	-	5 - 1000 MHz	dB	-	0.2	± 0.7
		1000 - 2150 MHz	dB	-	0.8	± 1.5
		2150 - 2400 MHz	dB	-	1.3	± 1.8
Phase Unbalance (Nominal 180°)	-	5 - 1000 MHz	°	-	2	± 5
		1000 - 2150 MHz	°	-	2	± 10
		2150 - 2400 MHz	°	-	4	± 12
Return Loss: Input	-	5 - 2150 MHz	dB	9	10	-
		2150 - 2400 MHz	dB	6	9	-
Return Loss: Output	-	5 - 1000 MHz	dB	10	15	-
		1000 - 2400 MHz	dB	6	9	-
Isolation (between outputs)	-	5 - 2400 MHz	dB	10	18	-

Absolute Maximum Ratings ^{1,2}

Parameter	Absolute Maximum
Max Input Power	1W
DC current	240mA
Operating Temperature	-40°C to +80°C
Storage Temperature	-40°C to +85°C

Recommended PCB Configuration



1. Exceeding any one or combination of these limits may cause permanent damage to this device.
2. M/A-COM does not recommend sustained operation near these survivability limits.

2

M/A-COM Inc. and its affiliates reserve the right to make changes to the product(s) or information contained herein without notice. M/A-COM makes no warranty, representation or guarantee regarding the suitability of its products for any particular purpose, nor does M/A-COM assume any liability whatsoever arising out of the use or application of any product(s) or information.

- **North America** Tel: 800.366.2266 / Fax: 978.366.2266
- **Europe** Tel: 44.1908.574.200 / Fax: 44.1908.574.300
- **Asia/Pacific** Tel: 81.44.844.8296 / Fax: 81.44.844.8298

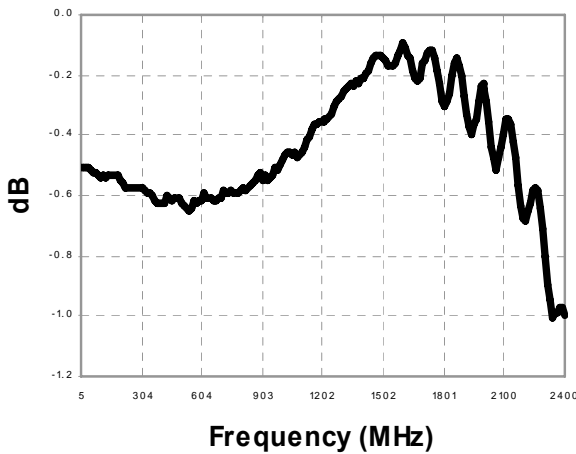
Visit www.macom.com for additional data sheets and product information.

**2 Way 0° Power Divider
5-2400MHz**

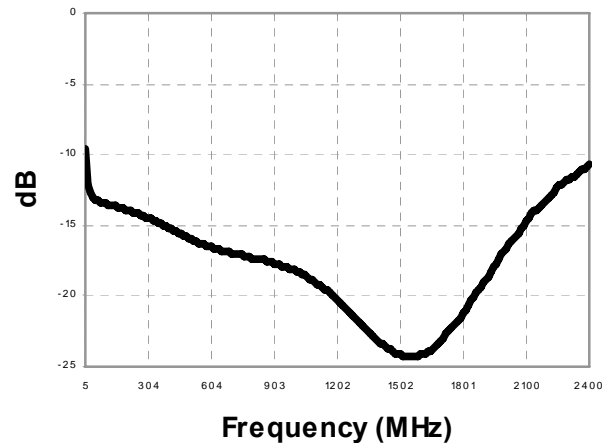
**MAPDCT0026
V1P**

Typical Performance Curves $T_A = 25^\circ\text{C}$, $Z_0 = 75\Omega$

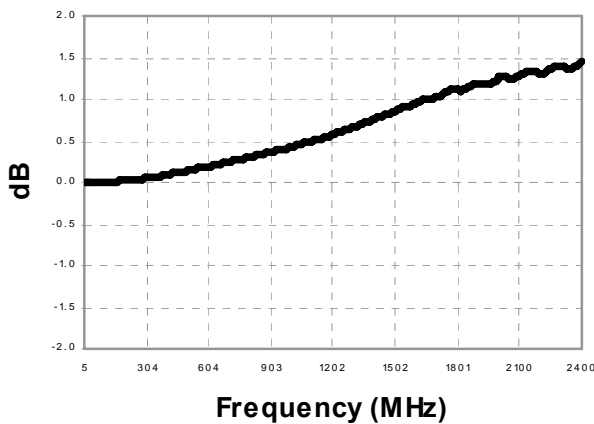
Insertion Loss



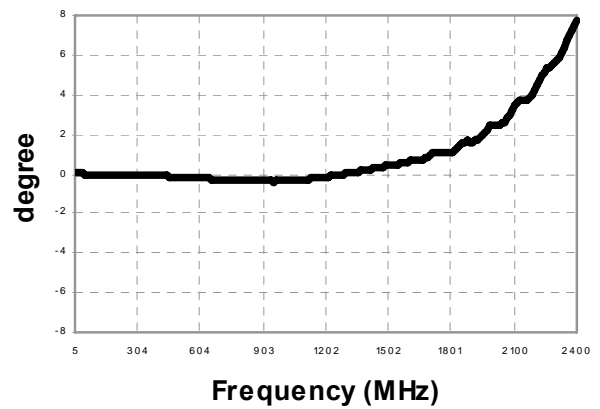
Isolation



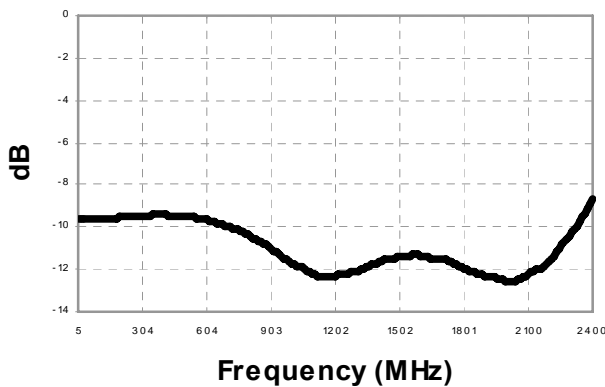
Amplitude Unbalance



Phase Unbalance



Return Loss: Input



Return Loss: Output

